



Address: FETİH AREA ADANA RINGROAD NO:113  
KARATAY KONYA -TURKEY  
Phone : 0332 346 06 10 FAX: 0332 342 65 14  
Web : [www.asekon.com.tr](http://www.asekon.com.tr) E-Mail: [international@asekon.com.tr](mailto:international@asekon.com.tr)

## ASK 110 L6+4 35 TONS PRODUCT BROCHURE



DESCREPTION	UNITE OF MEASURE	L6	L7	L6+S4	S5	S6
Maksimum hidrolik uzanma ( yatay) Maximum hydraulic outreach (Ver.)	m	16.65		29.73		
Maksimum hidrolik uzanma ( dikey) Maximum hydraulic outreach (horz.)		20.46		33.30		
Maksimum kaldırma momenti (+20°) Maximum Lifting moment(+20°)	kg*m	110000		110000		
	kN*m	1080		1080		
Maksimum Yü k Kapasitesi Maximum Lifting Capacity	3 m / kg	36660		35660		
Dönme Hızı Slewing Speed	Rpm	1		1		
Dönme Açısı Slewing Angle	(°)	Sonsuz - Endless				
Dönme Kapasitesi - En fazla eğim Slewing Capacity - Maximum Slope	(°)	13°				
Çalışma Basıncı Working pressure	bar	280				
Önerilen yağ döngüsü Recommended oil delivery	l/min	100				
Yağ Tankı kapasitesi Oil Tank Capacity	l (litter)	330				
Maksimum Ayak açıklığı Maximum Outrigger Reach	cm	428.4		428.4		
Standart vinç ağırlığı (± %3) Standard crane weight (± %3)	kg	11500		14000		

ASELKON CRANE KAMPUS MACHINERYINDUSTRYand TRADING LTD.,

KALİTE STANDARTLARIMIZ





**Adress:** FETİH AREA ADANA RINGROAD NO:113

KARATAY KONYA -TURKEY

**Phone :** 0332 346 06 10 FAX: 0332 342 65 14

**Web :** [www.aselkon.com.tr](http://www.aselkon.com.tr) **E-Mail:** [international@aselkon.com.tr](mailto:international@aselkon.com.tr)

## Technical Specifications

### Chassis of Crane

- The Crane and outriggers are mounted on to its own chasis. This Chasis is connected to the Vehicle's Chasis with screws and studs. In case of vehicle malfunction full set of the crane can be connected to the another vehicle. .

### Steel Construction

- The Crane chassis, main boom and upright are made from ST 52-3 quality steel sheet, the telescopic and the upright boom are produced from high-strength ALFORM -700 or equivalent material.

### Rotation System

- Slewing ring, planetary reducers, hydraulic motor, hydraulic brakes and endless rotation hydraulic distributor work on the Crane.

### Outriggers

- 2 pieces under the crane, 2 pieces under the chassis vertical and horizontal mobile hydraulic outriggers of the balance are made (total 4 pieces). These outriggers are mounted in the frame of the crane. During the operation of the crane come down, the vehicle's chassis, axles and shears is unable to load.
- Combined bending and torsion foot booms sensitive resources, etc. as resistant high-strength material (at least ST52 quality or equivalent) type of box is manufactured.
- On the foot of retainers imported blocking valves are used.

### Boom System

- There are 1 upright boom, 1 main boom, 1 folding boom 6 hydraulic extension booms basically. At folding part, there are 4 hydraulic extension booms and 2 mechanic booms.
- Wear and reduces friction between the main boom and telescopic booms guide Cestamid.
- Folding booms and telescopic booms are as hexagon produced from high-strength imported material.(ALFORM-700)

**ASELKON CRANE KAMPUS MACHINERY INDUSTRY and TRADING LTD.,**

**KALİTE STANDARTLARIMIZ**





**Adress:** FETİH AREA ADANA RINGROAD NO:113

KARATAY KONYA -TURKEY

**Phone :** 0332 346 06 10 FAX: 0332 342 65 14

**Web :** [www.asekon.com.tr](http://www.asekon.com.tr) **E-Mail:** [international@asekon.com.tr](mailto:international@asekon.com.tr)

## Body

- Case's length are designed in accordance to length of vehicle chassis.
- The base of case are produced as 4 mm from checker plate.
- To sides of the case 2 pieces of 4 mm sheet and on the back 1 collapsible cap which locks device are made.
- 180 cm stroke hydraulic extension will be mounted.

## Security(Optional)

- Besides, a weight control system will be equipped that records which boom worked how long and these records can be transferred to computer via USB then duration of maintenance and wear statistics of crane can be calculated.
- Pressures, load by percent, total working time and angles of the boom can be followed on the screen display in real-time.
- The whole electronic parts of the crane will have IP67 class ambient resistance.
- Optimization work on sloped ground with nine-axis three angle sensors (main boom, folding boom, on the second folding) and with electronic balance system.
- Pressures and angles of the boom can be followed on the screen display in real-time.
- The opportunity to watch from the operator panel by dual-axis motion tracking camera system and battery can run for 20 hours, wireless data transfer ability.

## Hydraulic System

- Double-acting hydraulic cylinders and honed from high-strength material (at least the quality of ST-52 or equivalent) will be produced.
- Rods precision-machined, hard chrome-plated high-strength material to (at least the quality of Ç-1040 or equivalent) will be produced.
- The hydraulic system; machine, hydraulic system and an overload in order to protect the people working under the machine, waiting for a long time to load the hose burst and pressure relief, load holding (Over center) and twin locking valves shall be used.
- Normal engine speed of the vehicle will provide 250 bar pressure pump continuously.
- Do operate the system easily (max. 350 bar pressure) imported origin piston pump will use
- The system maximum working pressure will be 250 bar.
- The system will be provided on the suction and return filter cleaning system using the system will be healthy and long life.
- Hydraulic plumbing pipes, seamless steel pipe imported from cold-shooting will be covered with phosphate ST37.
- The hydraulic hoses will be R2 double wire braid.
- A record thimbles used for installation will be imported.
- Hydraulic oil tank capacity of the crane will not interfere with the operation capacity will be selected.
- At all levels, hydraulic installations pressure can be read from manometer bar and kg/cm<sup>2</sup>.

**ASELKON CRANE KAMPUS MACHINERY INDUSTRY and TRADING LTD.,**

**KALİTE STANDARTLARIMIZ**





Address: FETI H AREA ADANA RINGROAD NO:113  
KARATAY KONYA -TURKEY  
Phone : 0332 346 06 10 FAX: 0332 342 65 14  
Web :[www.asekon.com.tr](http://www.asekon.com.tr) E-Mail:[international@asekon.com.tr](mailto:international@asekon.com.tr)

Additionally:

- Bronze bearing joints to be used in all places on the crane and bolt will be heat treated
- All bolt holes to be drilled and connected at one time, Thus bolt holes become parallel to each other and strains will be prevented

Materials

- |                       |  |
|-----------------------|--|
| • Pump                | Sunfab(SWEDEN)                               |
| • Stell Boom Group    | ALFORM-700 or DOMEX960 (SWEEDEN )            |
| • Crane Control       | Walvoil (ITALIAN)                            |
| • Foot Control        | Walvoil (ITALIAN)                            |
| • Reducer             | Dinamic Oil (ITALIAN)                        |
| • Valves              | OilComp (ITALIAN)                            |
| • Rotation Filter     | Ikron (ITALIAN)                              |
| • Suction Filter      | Ikron (ITALIAN)                              |
| • Hoses               | Manuli (ITALIAN)                             |
| • Installation pipes  | Benteler (ITALIAN)                           |
| • Hoses Drum          | Demac(ITALIAN)                               |
| • Hydraulic Cylinders | Materialsoriginally Europeanmade by ASELKON  |
| • Ring Gear           | IMO (GERMAN) 1380mm diameter external thread |



**High Quality Materials.**

**Supplier(s) of Materials**



Payment

- 50 % Advance with the Order Confirmation
- 50% Before delivery of good(s)

Delivery

- 25 Days Ex-Factory after receiving the Advance

Warranty

The warranty period of the Crane will be 24monthsby certificateof the Ministry ofIndustry and Trade.

**ASELKON CRANE KAMPUS MACHINARYINDUSTRYand TRADING LTD.,**

**KALİTE STANDARTLARIMIZ**







Address: FETİH AREA ADANA RINGROAD NO:113

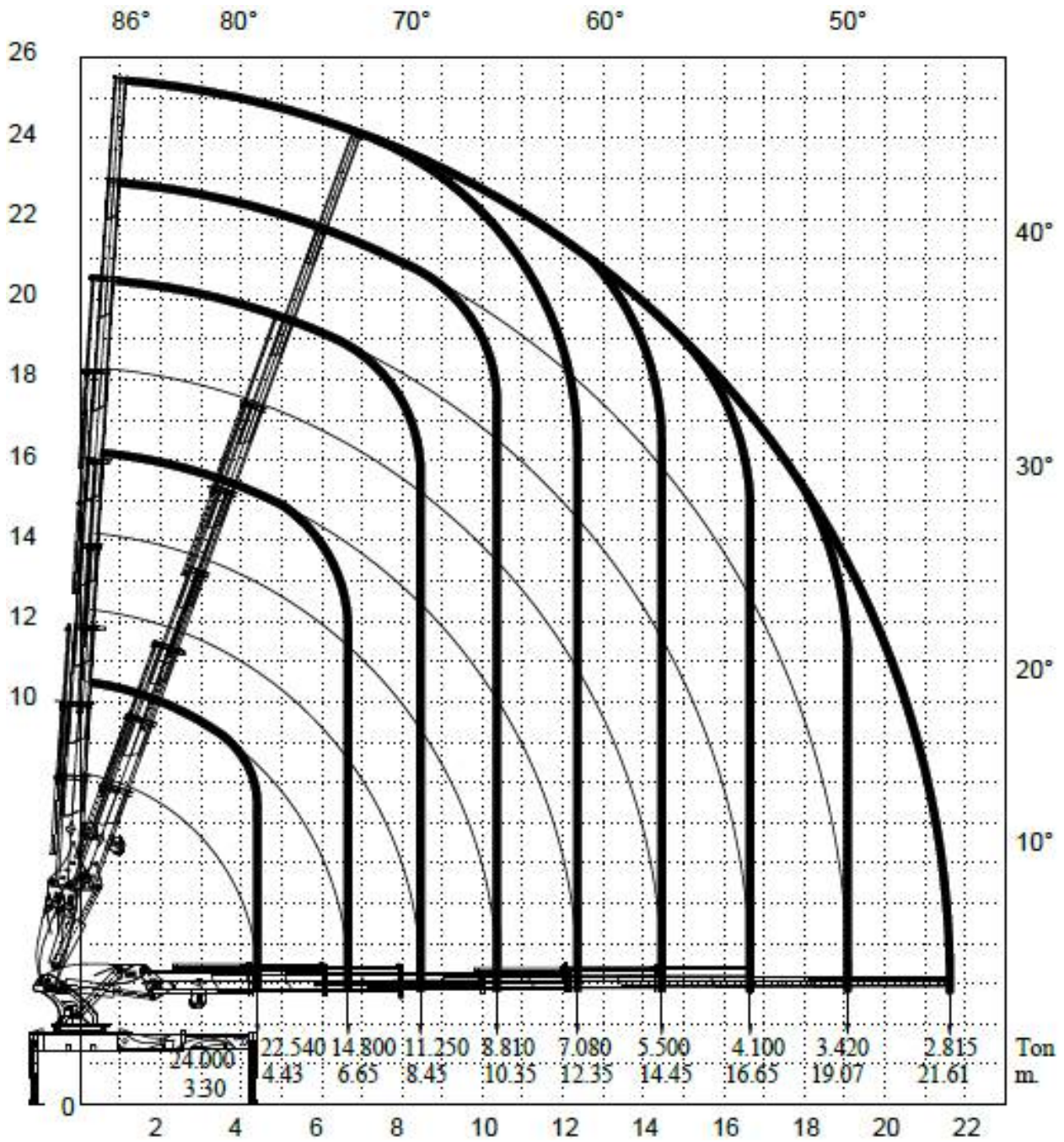
KARATAY KONYA -TURKEY

Phone : 0332 346 06 10 FAX: 0332 342 65 14

Web : [www.asekon.com.tr](http://www.asekon.com.tr) E-Mail: [international@asekon.com.tr](mailto:international@asekon.com.tr)

## SINGLE FOLDING LOAD DIAGRAM

### ASK 110



ASELKON CRANE KAMPUS MACHINERYINDUSTRYand TRADING LTD.,

KALİTE STANDARTLARIMIZ





Adress: FETİH AREA ADANA RINGROAD NO:113

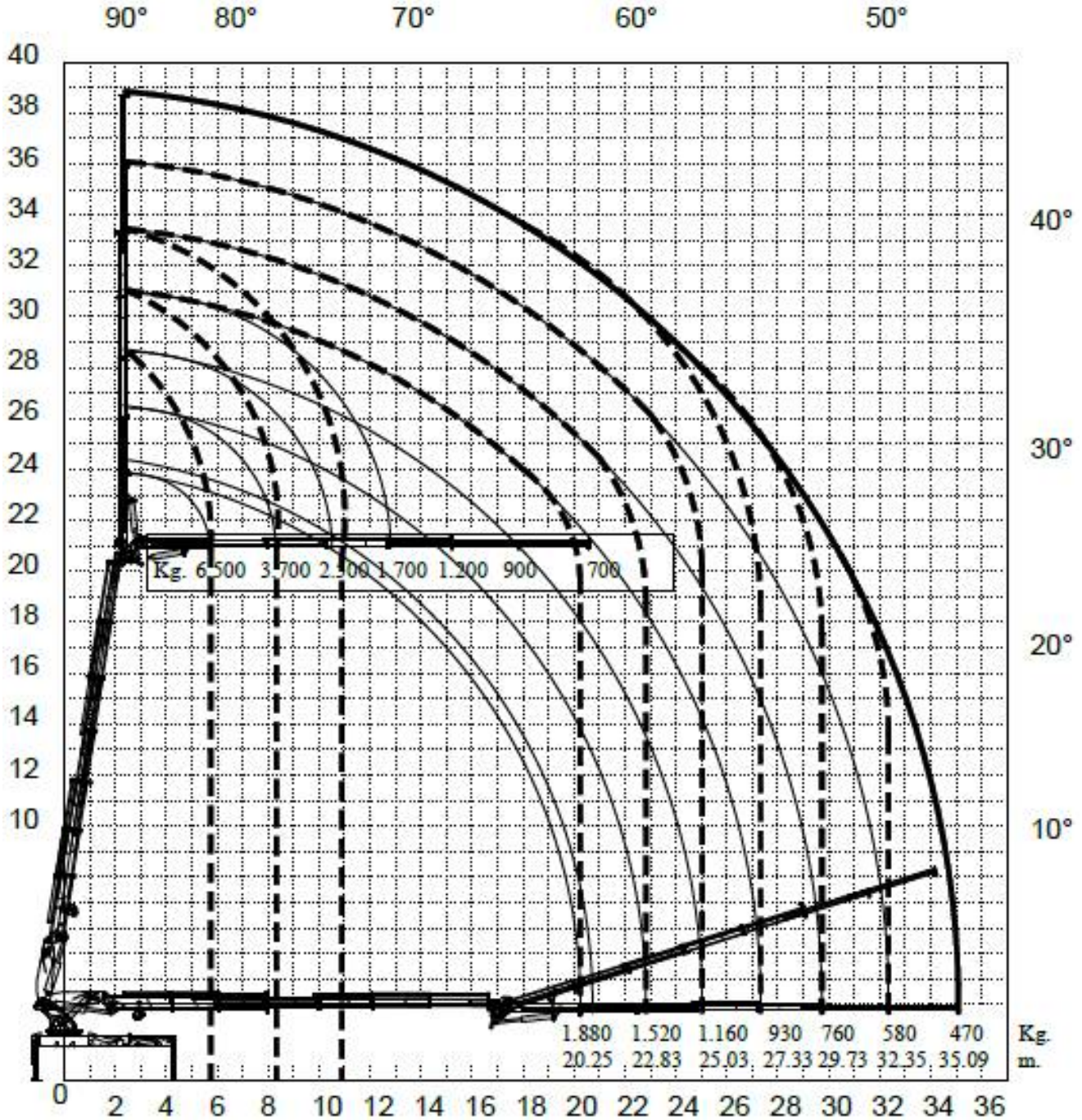
KARATAY KONYA -TURKEY

Phone : 0332 346 06 10 FAX: 0332 342 65 14

Web : [www.asekon.com.tr](http://www.asekon.com.tr) E-Mail: [international@asekon.com.tr](mailto:international@asekon.com.tr)

## DOUBLE FOLDING LOAD DIAGRAM

### ASK 110



ASELKON CRANE KAMPUS MACHINERYINDUSTRYand TRADING LTD.,

KALİTE STANDARTLARIMIZ







Address: FETİH AREA ADANA RINGROAD NO:113  
KARATAY KONYA -TURKEY  
Phone : 0332 346 06 10 FAX: 0332 342 65 14  
Web : [www.aselkon.com.tr](http://www.aselkon.com.tr) E-Mail: [international@aselkon.com.tr](mailto:international@aselkon.com.tr)



ASELKON CRANE KAMPUS MACHINERYINDUSTRYand TRADING LTD.,  
KALİTE STANDARTLARIMIZ





**Address:** FETİH AREA ADANA RINGROAD NO:113  
KARATAY KONYA -TURKEY  
**Phone :** 0332 346 06 10 **FAX:** 0332 342 65 14  
**Web :** [www.asekon.com.tr](http://www.asekon.com.tr) **E-Mail:** [international@asekon.com.tr](mailto:international@asekon.com.tr)



**ASELKON CRANE KAMPUS MACHINERYINDUSTRYand TRADING LTD.,**  
**KALİTE STANDARTLARIMIZ**

