



TA40 Telescopic/Articulating Aerial Device

- **Compensating Articulating Arm Maximizes Reach and Height Capability**
- **Platform Access From the Ground – With Articulating Arm Elevated or Stowed**
- **Side Reach up to 29.5 ft (9.0 m)**
- **Working Height up to 45.7 ft (13.9 m)**
- **No Counterweight or Outriggers Required for Stability**
- **Single Handle Multiple Function Control**





Altec TA40 Specifications

STANDARD FEATURES

- Insulated Aerial Device
- Centrifugally Cast Fiberglass Upper Boom
- Hydraulically Extended Boom
- Continuous Rotation
- Platform, 24 x 30 x 42 in (610 x 762 x 1067 mm)
- Single Handle Upper Control
- Closed Center Hydraulic System
- Hydraulic Tool Circuit at Boom Tip
- Designed in ISO 9001 Certified Facility

GENERAL SPECIFICATIONS

Ground to Bottom of Platform*		
End-Mounted Platform	41.0 ft	12.5 m
(@ Reach from Centerline)	11.0 ft	3.3 m
Working Height*		
End-Mounted Platform	46.0 ft	14.0 m
Maximum Side Reach		
End-Mounted Platform	29.5 ft	9.0 m
(@ Platform Height)	17.4 ft	5.3 m
Stowed Travel Height, approx*	11.9 ft	3.6 m
Platform Capacity	400 lb	181 kg
Articulating Arm	-5° to +91°	
Boom Articulation	-38° to +75°	
Rotation	Continuous	

*Based on 40 in (1016 mm) Chassis Frame Height



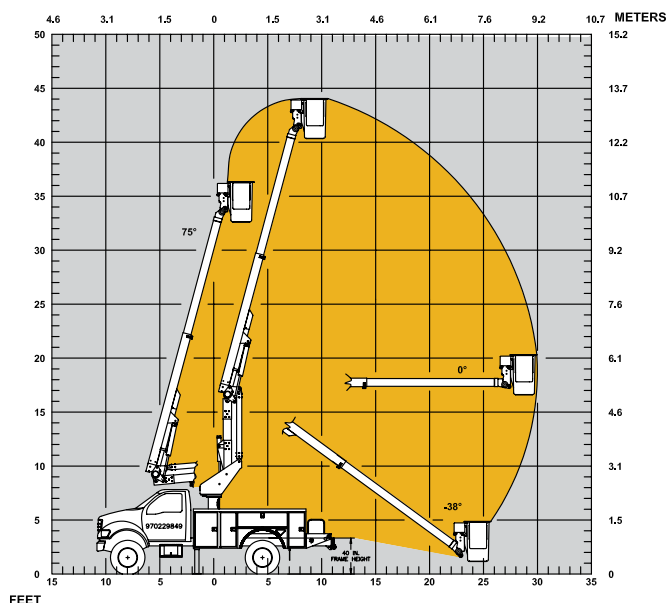
OPTIONS

- Secondary Stowage System, 12 VDC
- Engine Start/Stop: Captive Air
- Lifting Eye on Lower Boom
- Outriggers, Modified A-Frame, 130 in (3302 mm) Spread
- Platform Cover and Liner
- Platform Rotator, 180°
- Reservoir, Hydraulic – 16 Gallon or 25 Gallon
- Throttle Control
- Tool Circuit at Tailshelf

RECOMMENDED FEATURES

- Fall Protection System
- Wheel Chocks
- Outrigger Pads (with Outrigger Option)
- Platform Liner

REACH DIAGRAM



Altec Aerial Devices meet or exceed all applicable ANSI Standards as of the date of manufacture. Altec reserves the right to improve models and change specifications without notice or obligation.

Sales: 800-958-2555
Service: 877-GO ALTEC



Manufacturing and Service Facilities Located
Throughout the United States and Canada
www.altec.com

Altec Industries, Inc.

210 Inverness Drive
Birmingham, Alabama 35242
Phone 205/991-7733
sales@altec.com