



Altec L36A/L42A

Articulating Overcenter Aerial Device

- **Versatile Service Vehicle — Outriggers Not Required**
- **Low Life-Cycle Costs**
- **Working Height Up to 47 ft (14.3 m)**
- **Working Side Reach Up to 27 ft (8.2 m)**
- **400 lb (181 kg) Platform Capacity**





Altec L36A/L42A Specifications

STANDARD FEATURES

- Altec ISO-Grip® Control System
- Overcenter Articulating Aerial Device
- Insulated, ANSI Category C, 46 kV and Below
- Lower Boom Insulator
- Walking Link Articulation of Upper Boom
- Continuous Rotation
- Lower Boom Articulation 107°
- Upper Boom Articulation Up to 270°
- Side-Mounted Platform 24 x 30 x 39 in (610 x 762 x 991 mm)
- Full Pressure, Open Center Hydraulic System
- Hydraulic Tool Circuit at Boom Tip
- Outrigger Boom Interlock System (with Outrigger Option)
- Outrigger Motion Alarm (With Outrigger Option)
- Back Up Alarm

RECOMMENDED FEATURES

- Fall Protection System
- Platform Liner
- Wheel Chocks
- Outrigger Pads (With Outrigger Option)

GENERAL SPECIFICATIONS

	L36A		L42A	
Ground to Bottom of Platform* (at Distance from Centerline)	37.1 ft	11.4 m	42.3 ft	12.9 m
Reach from Centerline of Rotation	3.0 ft	0.9 m	3.0 ft	0.9 m
Lower Boom at 0°	28.4 ft	8.7 m	32.5 ft	9.9 m
Lower Boom at 107°	24.6 ft	7.5 m	26.9 ft	8.2 m
Stowed Travel Height	10.2 ft	3.1 m	10.2 ft	3.1 m
Platform Capacity	400 lb	181 kg	400 lb	181 kg
Boom Articulation				
Lower Boom	0° to + 107°		0° to + 107°	
Upper Boom	0° to + 230°		0° to + 270°	
Rotation	Continuous		Continuous	
Upper Boom Isolation Gap	131.8 in	3348 mm	150.8 in	3830 mm
Lower Boom Insulator Gap	7.0 in	179 mm	12.0 in	305 mm

*Based on 40 in (1016 mm) Chassis Frame Height

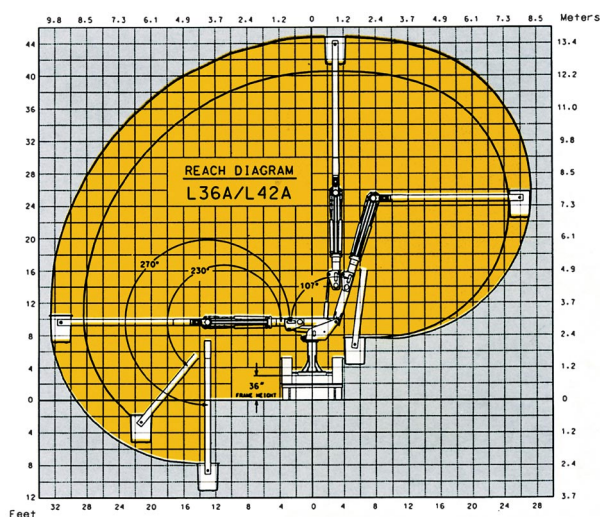


Side-by-Side Booms for Low Travel Height

OPTIONS

- Diagnostic Pressure Test Kit
- Secondary Stowage System
- Engine Start/Stop
- Lower Boom Lifting Eye
- Outriggers, Modified A-Frame
- Platform Cover and Liner
- Single Handle Control
- Throttle Control
- Tool Circuit at Tailshelf

REACH DIAGRAM



Altec Aerial Devices meet or exceed all applicable ANSI Standards as of the date of manufacture. Altec reserves the right to improve models and change specifications without notice or obligation.



Superior Working Reach with No Outriggers

Altec Sales and Service

Altec Industries, Inc.

Post Office Box 10264
Birmingham, Alabama 35202
Phone 205/991-7733
Fax 205/991-9993



Manufacturing and Service Facilities Located
Throughout the United States and Canada