



## **Altec AT30-G Telescopic Aerial Device**

- Altec ISO-Grip® System
- 35 ft (10.7 m) Working Height
- 24 ft (7.3 m) Side Reach
- Platform Capacity to 400 lb (181 kg)
- Easily Mounted on 15,000 lb GVWR (6804 kg) Chassis  
No Outriggers Required







# Altec AT30-G Specifications

## STANDARD FEATURES

- Altec ISO-Grip® System
- Telescopic Aerial Device
- Hydraulic Boom Extension
- Hydraulic Platform Leveling
- Insulated, ANSI Category C, 46 kV and Below
- Noncontinuous Rotation
- Platform, 24 x 24 x 42 in (610 x 610 x 1067 mm)
- Platform Capacity - 350 lb (159 kg) Fixed  
350 lb (159 kg) w/ Rotator
- Fully Metered Single Handle Upper Control
- Full Pressure, Open Center Hydraulic System
- Platform Access From the Ground
- Emergency Lowering Valve
- Tool Circuit at Platform
- Outrigger Boom Interlock System (With Outrigger Option)
- Outrigger Motion Alarm (With Outrigger Option)
- Back-Up Alarm

## OPTIONS

- Continuous Rotation
- Secondary Stowage System
- Engine Start/Stop
- Tool Circuit at Tailshelf
- Outriggers, Vertical
- Platform, 24 x 30 x 42 in (610 x 762 x 1067 mm)
- Additional Platform Capacity
- Platform Cover
- Platform Rotator - 90° or 180°

## GENERAL SPECIFICATIONS

	AT30-G	
Ground to Bottom of Platform*	30.5 ft	9.3 m
(at Distance From Centerline)	3.8 ft	1.2 m
Maximum Reach		
End-Mount	23.6 ft	7.2 m
Side-Mount	21.6 ft	6.6 m
(@ Platform Height)	6.3 ft	1.9 m
Stowed Travel Height	10.5 ft	3.2 m
Boom Articulation	-13.5° to +80°	
Rotation	Noncontinuous 370°	
Weight of Unit	1647 lb	747 kg

\*Based on 40 in (1016 mm) Chassis Frame Height

Altec Aerial Devices meet or exceed all applicable ANSI Standards as of the date of manufacture. Altec reserves the right to improve models and change specifications without notice or obligation.

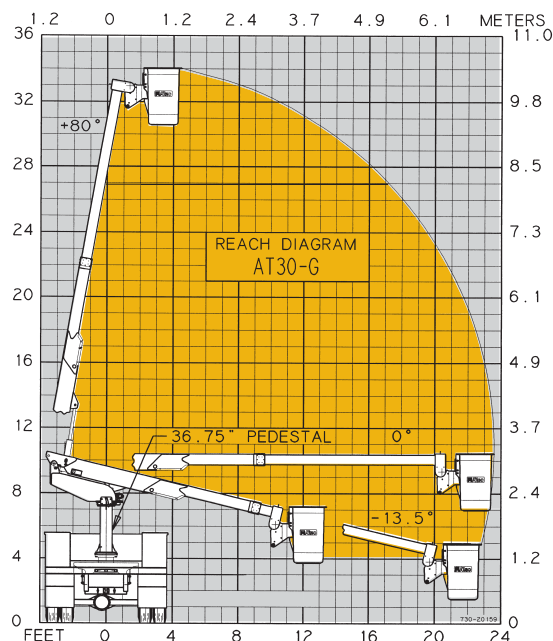


Stowed for Travel

## RECOMMENDED FEATURES

- Fall Protection System
- Platform Liner
- Wheel Chocks
- With Outrigger Option:
  - Outrigger Pads

## REACH DIAGRAM



Boom Tip Covers

Altec Sales and Service



Manufacturing and Service Facilities Located  
Throughout the United States and Canada

**Altec Industries, Inc.**

Post Office Box 10264  
Birmingham, Alabama 35202  
Phone 205/991-7733  
Fax 205/991-9993