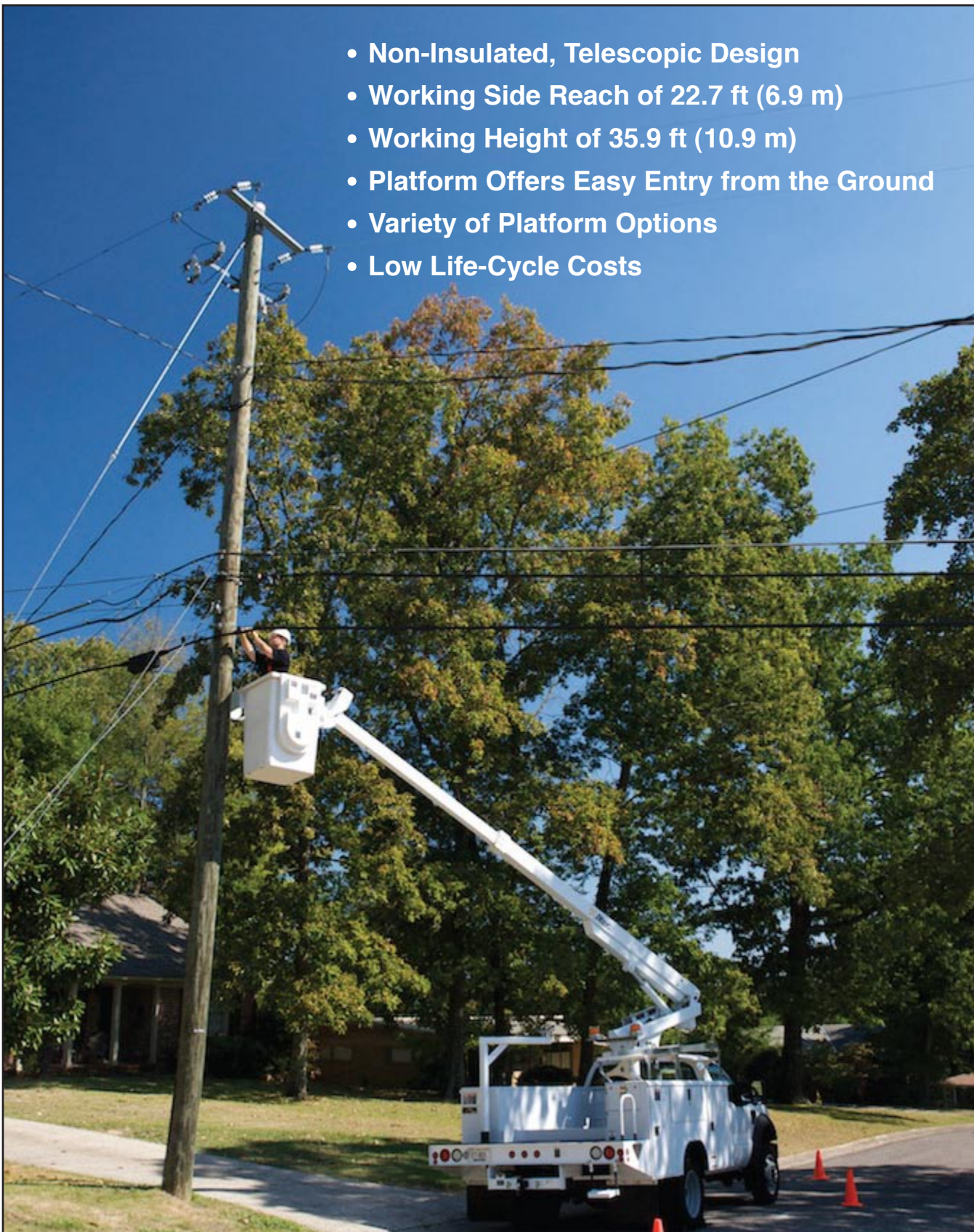




## **Altec AT200A Telescopic Aerial Device**

- Non-Insulated, Telescopic Design
- Working Side Reach of 22.7 ft (6.9 m)
- Working Height of 35.9 ft (10.9 m)
- Platform Offers Easy Entry from the Ground
- Variety of Platform Options
- Low Life-Cycle Costs







# Altec AT200A Specifications

## STANDARD FEATURES

- Non-Insulated Aerial Device
- All Steel Boom Construction
- Hydraulically Extended Boom
- Non-continuous 370° Rotation
- Engine Start/Stop at Upper and Lower Controls
- Open Center Hydraulic System
- 120 VAC Circuit in Booms with Outlets at the Platform
- Minimum 10,500 lb (4763 kg) GVWR Chassis, 60 in (1524 mm) CA or 84 in (2134 mm) CA

## GENERAL SPECIFICATIONS

Ground to Bottom of Platform*		
End-Mounted Platform	30.9 ft	9.4 m
Side-Mounted Platform	30.9 ft	9.4 m
Working Height*		
End-Mounted Platform	35.9 ft	10.9 m
Side-Mounted Platform	35.9 ft	10.9 m
Maximum Reach from Centerline of Rotation to Lip of Platform		
End-Mounted Platform	22.7 ft	6.9 m
Side-Mounted Platform	20.7 ft	6.3 m
Stowed Travel Height, approximate*	11.0 ft	3.4 m
Platform Capacity		
End-Mounted Platform	300 lb	136 kg
Side-Mounted Platform	350 lb	159 kg
Boom Articulation	-13.5° to 80°	
Rotation	370° Non-continuous	

\*Based on 40 inch (1016 mm) Chassis Frame Height

Altec Industries, Inc. reserves the right to improve models and change specifications without notice or obligation. Altec Aerial Devices meet or exceed all applicable ANSI Standards as of the date of manufacture.

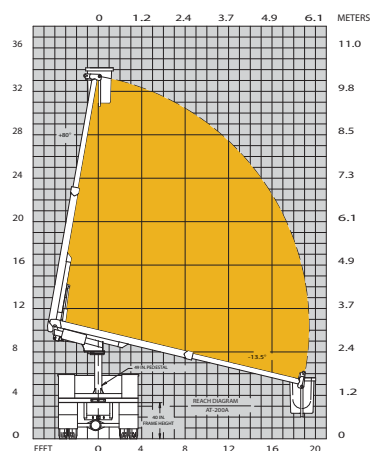
## OPTIONS

- Pedestal or Bridge Mountings
- Choice of Platforms:
  - Side or End-Mounted
  - Walk-In Splicer or Rectangular
  - Gravity or Hydraulic Leveling
- Single or Two Speed Controls
- Variable Speed Single Handle Controller
- Choice of Reservoir:
  - Bed-Mounted
  - Pedestal-Mounted
- Airline to Platform
- Canopy and Curtain Assembly
- Secondary Storage System
- Manual Lowering Valve
- Heater for Platform
- Seat for Platform
- Tool Pouches and Trays

## RECOMMENDED FEATURES

- Fall Protection System
- Platform Liner
- Wheel Chocks
- Platform Cover

## REACH DIAGRAM



Optional Variable Speed Single Handle Controller



End-Mounted Splicer Platform



Optional Canopy Body

Altec Sales and Service



Manufacturing and Service Facilities Located  
Throughout the United States and Canada  
[www.altec.com](http://www.altec.com)

## Altec Industries, Inc.

Post Office Box 10264  
Birmingham, Alabama 35202  
Phone 205/991-7733  
Fax 205/991-9993