



Altec AM900 Non-Overcenter Aerial Device



- Altec ISO-Grip® Control System
- Working Height To 71.6 ft (21.8 m)
- Side Reach Greater Than 37 ft (11.3 m)
- Side by Side Booms for Low Travel Height
- Full Speed Multifunction Controls



Altec AM900 Specifications

STANDARD FEATURES

- Altec ISO-Grip® Control System
- Working Height To 71.6 ft (21.8 m)
- Side Reach To 37.4 ft (11.4 m)
- Pressure and Flow Compensated, Pilot Operated Hydraulic System
- Insulated, ANSI Category B, 46kV & Below
- Personnel Lift
- Lower Boom Insulator
- Continuous Rotation
- Boom Storage Protection System
- Two-Man End Mounted Platform
- A-Frame Outriggers – 2 Sets
- Lower Controls
- Leakage Collector Test Band
- Open/Closed Center Tool Capability
- Compact Boom End
- Lifetime Structural Warranty
- Outrigger Motion Alarm
- Outrigger Boom Interlock System
- Back-Up Alarm

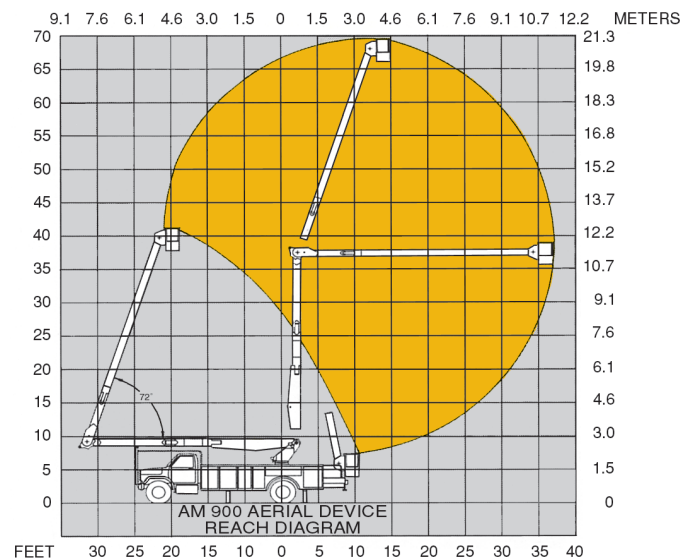
OPTIONS

- ANSI Category C or A
- Emergency Operating System
- Engine Start/Stop
- Radial Outriggers
- Tool Circuit at Tailshelf

RECOMMENDED FEATURES

- Fall Protection System
- Platform Liner
- Platform Cover
- Wheel Chocks

REACH DIAGRAM



GENERAL SPECIFICATIONS

Height to Bottom of Platform* End-Mounted	66.6 ft	20.3 m
Working Height* End-Mounted	71.6 ft	21.8 m
Reach from Centerline of Rotation, Maximum	37.2 ft	11.3 m
Stowed Travel Height*	10.6 ft	3.2 m
Rotation - Continuous	360°	360°
Platform Capacity Single Two-Man, End-Mounted	700 lb	317.5 kg
Lower Boom Articulation	91°	
Upper Boom Articulation	162°	
Lower Boom Fiberglass Isolation	30 in	762 mm
Upper Boom Isolation, Min.	21.4 ft	6.5 m

*Based on 40 inch (1016 mm) chassis frame height.

Altec Aerial Devices meet or exceed all applicable ANSI Standards as of the date of manufacture. Altec reserves the right to improve models and change specifications without notice or obligation.



Low Stow Travel Height

Altec Sales and Service



Manufacturing and Service Facilities Located Throughout the United States and Canada
www.altec.com

ALT3001070
AM900-3M-3/07

Altec Industries, Inc.

Post Office Box 10264
Birmingham, Alabama 35202
Phone 205/991-7733
Fax 205/991-9993