



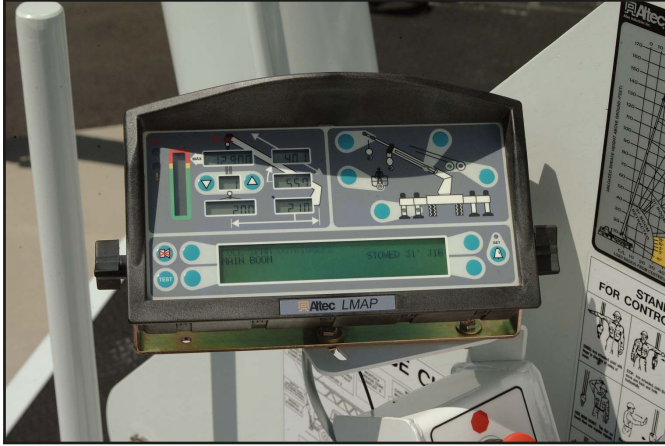
# Altec AC18-70B Hydraulic Telescopic Crane



- 18 Ton (16.3 t) Maximum Lifting Capacity
- 70 ft (21.3 m) 3-Section Boom
- Altec LMAP (Load Moment & Area Protection) System



# Ateco AC18-70B Specifications



Ateco LMAP System

## RECOMMENDED FEATURES

- Wheel Chocks
- Fall Protection System (with Platform)
- Radio Remote Control (with Platform)
- Outrigger Pads

## CRANE SPECIFICATIONS

- 36,000 lb (16,330 kg) Maximum Lifting Capacity
- 70 ft (21.3 m) 3-Section Non-Insulated Boom
- 80 ft (24.4 m) Maximum Sheave Height
- Stowed Travel Height of 12.8 ft (3.9 m)
- Vehicle Travel Length of 38 ft (11.6 m)
- Outriggers; Main – Pivot Beam; Auxiliary – Modified A-Frame
- Hydraulic Pilot-Operated Control System
- Life Cycle Tested for Reliability

## STANDARD SAFETY FEATURES

- Ateco LMAP (Load Moment & Area Protection) System
  - Rated Capacity Limiter
  - Displays Boom Length, Angle, Load on Hook, Percent of Rated Capacity
  - Electronic Working Area Definition
  - Operator Audible Alarm Set-Points for Boom Angle, Length and Rotational Position
- Outrigger Boom Interlock System
- Outrigger Motion Alarm
- Back-Up Alarm
- Emergency Stop at Operator Controls
- Anti-Two Block Device

## OPTIONS

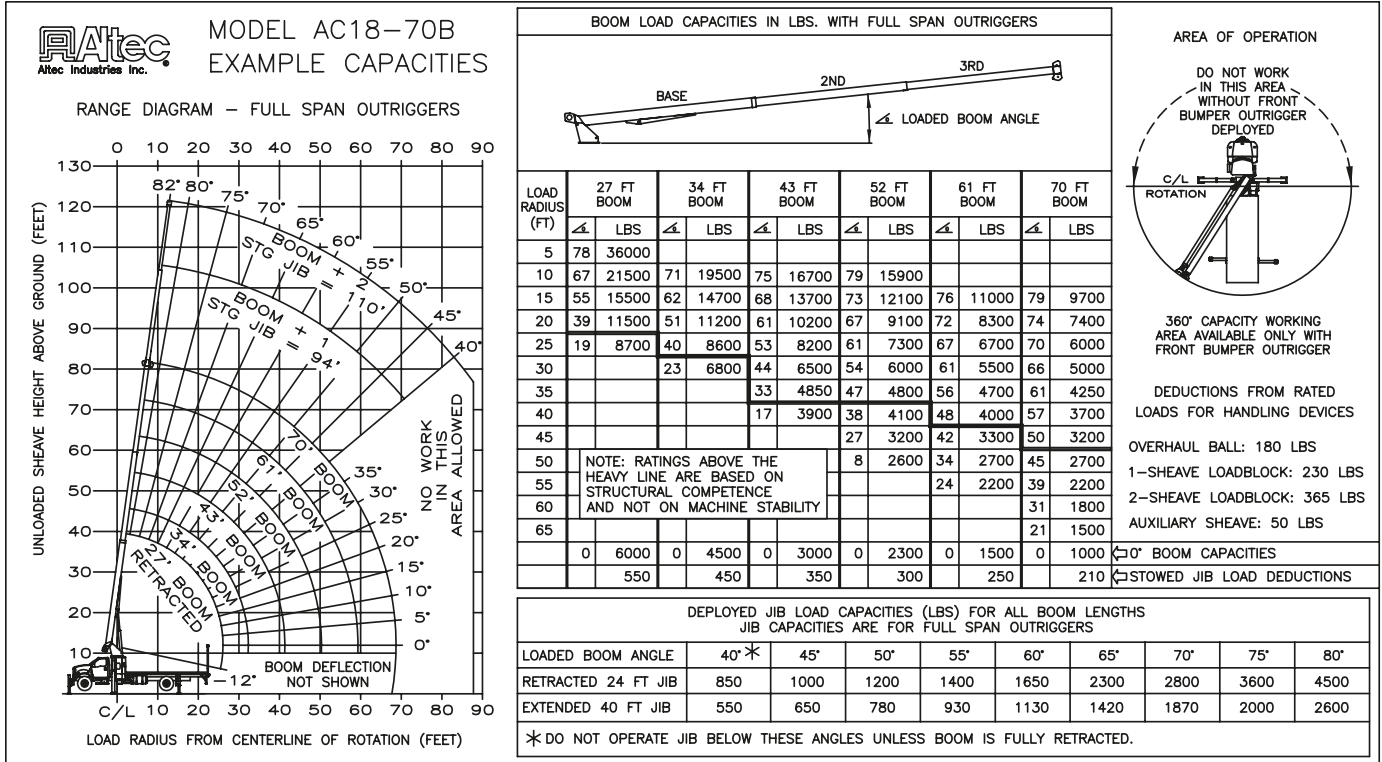
- 2-Piece 40 ft (12.2 m) Jib, 24 ft (7.3 m) Retracted
- 1-Piece 24 ft (7.3 m) Jib
- Load Hook/Winch Stow Switch
- 360° Capacities with Front Bumper Outrigger
- 2-Man Steel Platform
- Load Blocks for Multiple Parts of Line
- Hydraulic Tool Circuit at Tail Shelf
- Pintle Hitch
- Utility Tool Boxes
- Rotation Resistant Wire Rope
- Oil Cooler
- Drum Rotation Indicator

## MINIMUM CHASSIS REQUIREMENTS

Gross Vehicle Weight Rating	33,000 lb	14,969 kg
Front Axle Weight Rating	13,000 lb	5897 kg
Rear Axle Rating	20,000 lb	9072 kg
Cab-To-Axle	168 in	4267 mm
Wheel Base	236 in	5994 mm



# Altec AC18-70B Capacities



<p style="font-size: x-small;">OPERATOR AIDS MUST BE IN GOOD OPERATING CONDITION BEFORE OPERATING CRANE. REFER TO OWNERS MANUAL.</p> <p style="font-size: x-small;">KEEP AT LEAST 3 WRAPS OF LOADLINE ON DRUM AT ALL TIMES.</p> <p style="font-size: x-small;">USE ONLY 9/16" DIAMETER IWRC OR ROTATION RESISTANT WIRE ROPE WITH 37,000 LBS. MIN. BREAKING STRENGTH ON THIS MACHINE.</p>	1 PART LOAD LINE	2 PART LOAD LINE	3 PART LOAD LINE	4 PART LOAD LINE								
	LOADS UP TO	LOADS UP TO	LOADS UP TO	LOADS UP TO								
	IWRC XXIP WIRE ROPE 10,571 LBS.	ROTATION RESISTANT WIRE ROPE 7,400 LBS.	MAXIMUM BOOM LENGTH AT MAXIMUM ELEVATION WITH RIGGING SHOWN TO REACH THE GROUND 70 FT BOOM + 44 FT JIB	10,571 LBS. 21,142 LBS.	10,571 LBS. 21,142 LBS.	10,571 LBS. 21,142 LBS.	10,571 LBS. 21,142 LBS.	10,571 LBS. 21,142 LBS.	10,571 LBS. 21,142 LBS.	10,571 LBS. 21,142 LBS.	10,571 LBS. 21,142 LBS.	10,571 LBS. 21,142 LBS.

WINCH		LIFTS AND SPEEDS			
9/16" DIAMETER IWRC XXIP CABLE SUPPLIED	STANDARD PLANETARY WINCH SUPPLIED	8,410 LBS. 147 FT/MIN	16,820 LBS. 74 FT/MIN	25,230 LBS. 49 FT/MIN	33,640 LBS. 37 FT/MIN
ALL WINCH PULLS AND SPEEDS IN THIS CHART ARE SHOWN ON THE 3RD LAYER. WINCH LINE PULLS WOULD INCREASE ON THE FIRST AND SECOND LAYERS. WINCH LINE SPEED WOULD DECREASE ON THE FIRST AND SECOND LAYERS. WINCH LINE PULLS MAY BE LIMITED BY THE WINCH CAPACITY OF 8,410 LBS FULL DRUM OR ANSI CABLE SAFETY LIMITS SHOWN IN CHART FOR IWRC XXIP AND ROTATION RESISTANT WIRE ROPES.					

**CAUTION:**

1. Load ratings shown are maximum allowable loads with the crane mounted on an Altec-approved chassis.
2. Loaded boom angles at specified boom lengths give only an approximation of the operating radius. The boom angle before loading should be greater to account for deflections. Do not exceed the operating radius for rated loads.
3. When between listed lengths for radii always use the smallest of values shown. Capacities for the 31-foot boom length must only be lifted with boom fully retracted.
4. Load ratings are based on freely suspended loads with the crane properly set up on outriggers, with the machine leveled and standing on firm uniform supporting surface.
5. Actual working capacities depend on supporting surfaces, wind and other factors affecting stability such as hazardous surroundings, experience of personnel, and proper handling.
6. Weights of load block, stowed jib, or other accessories must be deducted from the rated capacities shown.



**For Service: 1-877-GO-ALTEC**

**For Sales: 1-540-992-5300**

Altec Cranes are supported by service centers and over 115 mobile service technicians positioned across North America, seven days a week, 24 hours a day.

**United States:**

Alabama Service Center  
1730 Vanderbilt Road  
Birmingham, AL 35234

Arizona Service Center  
2420 South 16th Avenue  
Phoenix, AZ 85007

California Service Center (Northern)  
325 Industrial Way  
Dixon, CA 95620

California Service Center (Southern)  
2882 Pomona Boulevard  
Pomona, CA 91766

Colorado Service Center  
641 Telluride Street  
Aurora, CO 80011

Florida Service Center  
2570 Old Okeechobee Road  
Palm Beach, FL 33409

Georgia Service Center  
287 First Street  
Forest Park, GA 30297

Indiana Service Center  
5201 West 84th Street  
Indianapolis, IN 46268

Kentucky Service Center  
200 Altec Drive  
Elizabethtown, KY 42701

Maryland Service Center  
1434 Hughes Ford Road  
Frederick, MD 21701

Massachusetts Service Center  
28 Wales Street  
Millbury, MA 01527

Missouri Service Center  
2106 S. Riverside Road  
St. Joseph, MO 64507

North Carolina Service Center  
1550 Aerial Avenue  
Credmoor, NC 27522

Ohio Service Center  
1236 Township Road 1175  
Ashland, OH 44805

Oregon Service Center  
13817 NE Sandy Boulevard  
Portland, OR 97230

Pennsylvania Service Center  
250 Laird Street  
Plains, PA 18705

Texas Service Center  
1001 Solon Road  
Waxahachie, TX 75156

Virginia Service Center  
325 South Center Drive  
Daleville, VA 24083

**Canada:**

British Columbia Service Center  
12352 84th Avenue  
Surrey, BC V3W 0J5

Manitoba Service Center  
57 Durand Road  
Winnipeg, Manitoba R2J 3T1

Ontario Service Center  
831 Nipissing Road  
Milton, Ontario L9T 4Z4



*Vehicle Travel Height 12.8 ft (3.9 m)*



*Easy Load Block Stowing*

**Altec Industries, Inc.**

325 South Center Drive  
Daleville, VA 24083



Manufacturing and Service Facilities Located  
Throughout the United States and Canada