



## Altec A-T40C Aerial Cable Placer

- Complete Cable Placing System
- Rotation Friction Drive
- 600 lb (272 kg) Side Load Protection
- Steel Platform 29 x 29x 43.5 in (737 x 737 x 1105 mm)
- 500 lb (227 kg) Platform Capacity
- 6,000 lb (2724 kg) Cable Reel Lifter with Driver and Brake
- 2000 lb (907 kg) Strand Reel with Brake





# Altec A-T40C Specifications

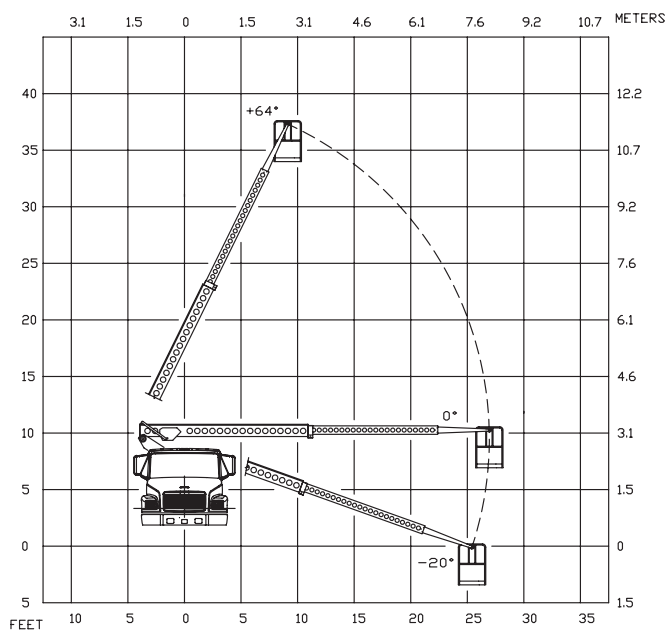
## STANDARD FEATURES

- Aerial Device, Two Stage Steel Boom (Non-Insulated)
- 720° Non-Continuous Rotation
- Steel Platform, 29 x 29 x 43.5 in (737 x 737 x 1105 mm) with Tool Boxes and Hangars
- Full-Function Joystick at Platform
- PTO-Driven 10,200 Watt Hydraulic Generator
- 600 lb (272 kg) Side Load Capacity
- 2000 lb (907 kg) Lifting Eye
- Voice Communication System Between Platform and Cab
- Arbor Bar Collars and Strand Reel Lifting Chain
- Back-Up Alarm
- Boom Out-of-Rest Light in Cab
- Tow Line Winch
- Large Fairlead with Solid Rollers
- 6000 lb (2724 kg) Reel Lifter with Driver and Brake
- 2000 lb (907 kg) Strand Reel with Brake
- Reel Lifter and Strand Brake Control in Cab

## RECOMMENDED FEATURES

- Fall Protection System
- Wheel Chocks

## REACH DIAGRAM



Altec Aerial Devices meet or exceed all applicable ANSI Standards as of the date of manufacture. Altec reserves the right to improve models and change specifications without notice or obligation.



## OPTIONS

- 120 VAC Outlet with GFI Protection
- Boom/Cable Guard on Lower End of Boom
- Platform Curtains, Hard Side
- Hydraulic Capstan Winch
- Hydraulic Tool Circuit at Tailshelf
- Three Phase Inverters
- Platform Heater
- Lasher and Reel Tools
- Wood and Steel Reel Adapters

## GENERAL SPECIFICATIONS

A-T40C		
Ground to Bottom of Platform*	35.1 ft	10.7 m
Working Height	40.1 ft	12.2 m
Maximum Side Reach	29.0 ft	8.8 m
Stowed Travel Height	11.5 ft	3.5 m
Lower Boom Articulation	-18° to +64°	

Reel Carrier/Driver		
Maximum Reel Diameter	84 in	2134 mm
Maximum Reel Width	71 in	1803 mm
Maximum Lift Capacity**	6000 lb	2724 kg
Drive Torque	20,000 in-lbs	2259 N•m
Maximum Brake Torque	9600 in-lbs	1085 N•m

Strand Carrier		
Maximum Reel Diameter	24 in	610 mm
Maximum Brake Torque	9600 in-lbs	1085 N•m
Maximum Holding Capacity**	2000 lb	907 kg

\* Based on chassis frame height of 40"

\*\* Actual reel carrying capacity may depend on the GVWR of the chassis and highway weight restrictions

Altec Sales and Service



Manufacturing and Service Facilities Located Throughout the United States and Canada

**ALTEC INDUSTRIES, INC.**

210 Inverness Drive  
Birmingham, Alabama 35242  
Phone 205/991-7733  
Fax 205/408-8051